



Planar Monolithics Industries, Inc.

RF & Microwave Components and Modules to 40GHz

ISO9001:2008 Certified

May 21, 2014

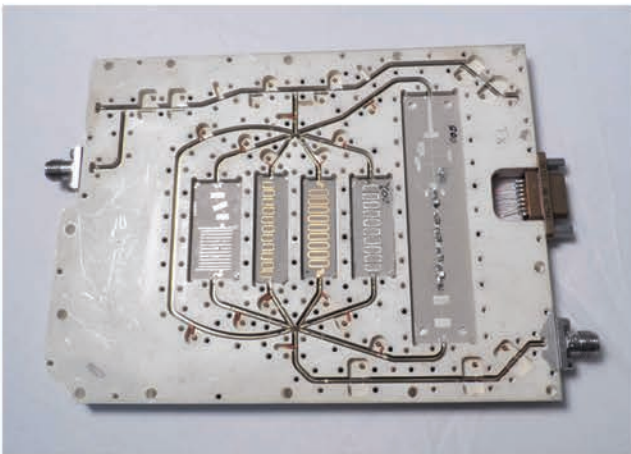
0.1 to 18.0GHz 6 Channel Switch Filter Bank with Ultra Slim Line Housing PMI Model No. 6SFB-100M18G-1MP-MAH



PMI Model No. 6SFB-100M18G-1MP-MAH is a Receive Switched Filter Bank operating over the frequency range of 100MHz to 18.0GHz. This unit incorporates a 2-Way, absorptive switch to select an input along with two 6-Way switches allowing one of the six filter paths to be chosen. This unit provides 6 dB of gain typically with a typical output of P1dB of +15dBm. The filter channels are centered at 3.4, 5.4, 7.4, 9.4 and 11.4GHz with 2GHz bandwidths. The switching speed is better than 100ns and the filters are easily customizable to meet any other requirements. Other gain requirements can be offered and the unit will accept 3.3V or 5V TTL controls. The +3.3V supply is optional. The housing measures 4.925" x 3.68" x 0.35"

Frequency Range	100MHz to 18.0GHz
Gain	6dB Typ
Isolation	J1, J6 100dB
Switching Speed	100ns
Inputs	J1, J6
J1 Input	Input from Backplane
Frequency	100MHz to 18.0GHz
Power Level	-80 dBm to -10 dBm
J6 Input	Output to Transceiver
Frequency	100MHz to 18.0GHz
Power Level	-52 dBm to -22 dBm
Outputs	J3
J3 Output	Output to Transceiver
Frequency	100MHz to 18.0GHz
Power Level	-74 dBm to -4dBm typ
Thru Channel Passband	100MHz to 18.0GHz
Number of Filter Channels	5 Channels
Channel 1 Center Frequency	3400MHz
3dB Bandwidth	2000MHz
Rejection	-40 dBc (100MHz to 2GHz) -40dBc (4.8 to 8.5GHz)
Channel 2 Center Frequency	5400MHz
3dB Bandwidth	2000MHz
Rejection	-40 dBc (100MHz to 4GHz) -40 dBc (6.8 to 13.5GHz)
Channel 3 Center Frequency	7400MHz
3dB Bandwidth	2000MHz
Rejection	-40 dBc (100MHz to 6GHz) -40 dBc (8.8 to 18GHz)
Channel 4 Center Frequency	9400MHz
3dB Bandwidth	2000MHz
Rejection	-40 dBc (100MHz to 8GHz) -40 dBc (10.8 to 18GHz)
Channel 5 Center Frequency	11400MHz
3dB Bandwidth	2000MHz
Rejection	-40 dBc (100MHz to 10GHz) -40 dBc (12.8 to 18GHz)
Control Logic	3.3V TTL
Power	+12V, -12V, +5V, +3.3V
Connectors	SMA (F)
Digital/Power Connector	15PIN Micro-D Mating Connector Provided
Size	4.925" x 3.68" x 0.35"
Finish	Painted Gray
Operating Temperature	-40°C to +85 °C

Internal Photo



PLANAR MONOLITHICS INDUSTRIES, INC.

7311-F Grove Road, Frederick,
Maryland 21704 USA |

Tel: 301-662-5019 | Fax: 301-662-1731

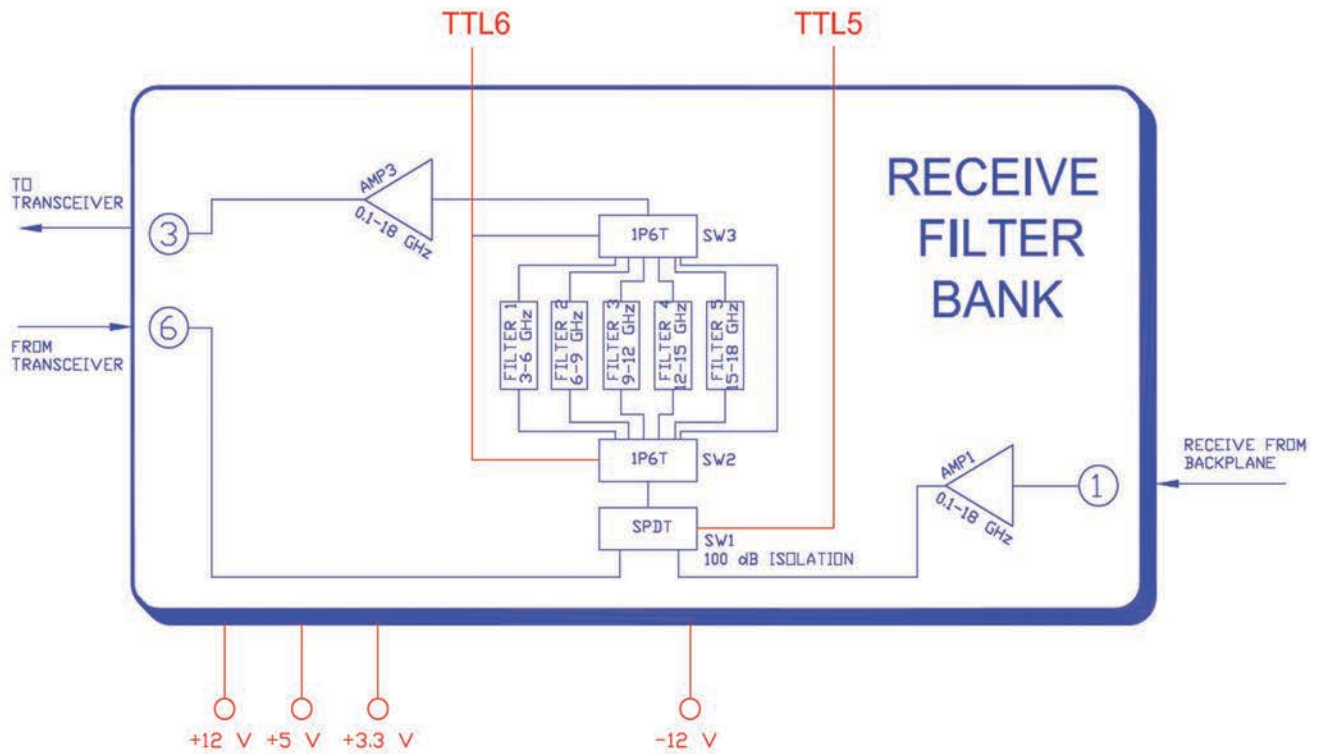
4921 Roberts J. Mathews Parkway
Suite 1 El Dorado Hills, CA 95762 USA

Tel: 916-542-1401 | Fax: 916-265-2597

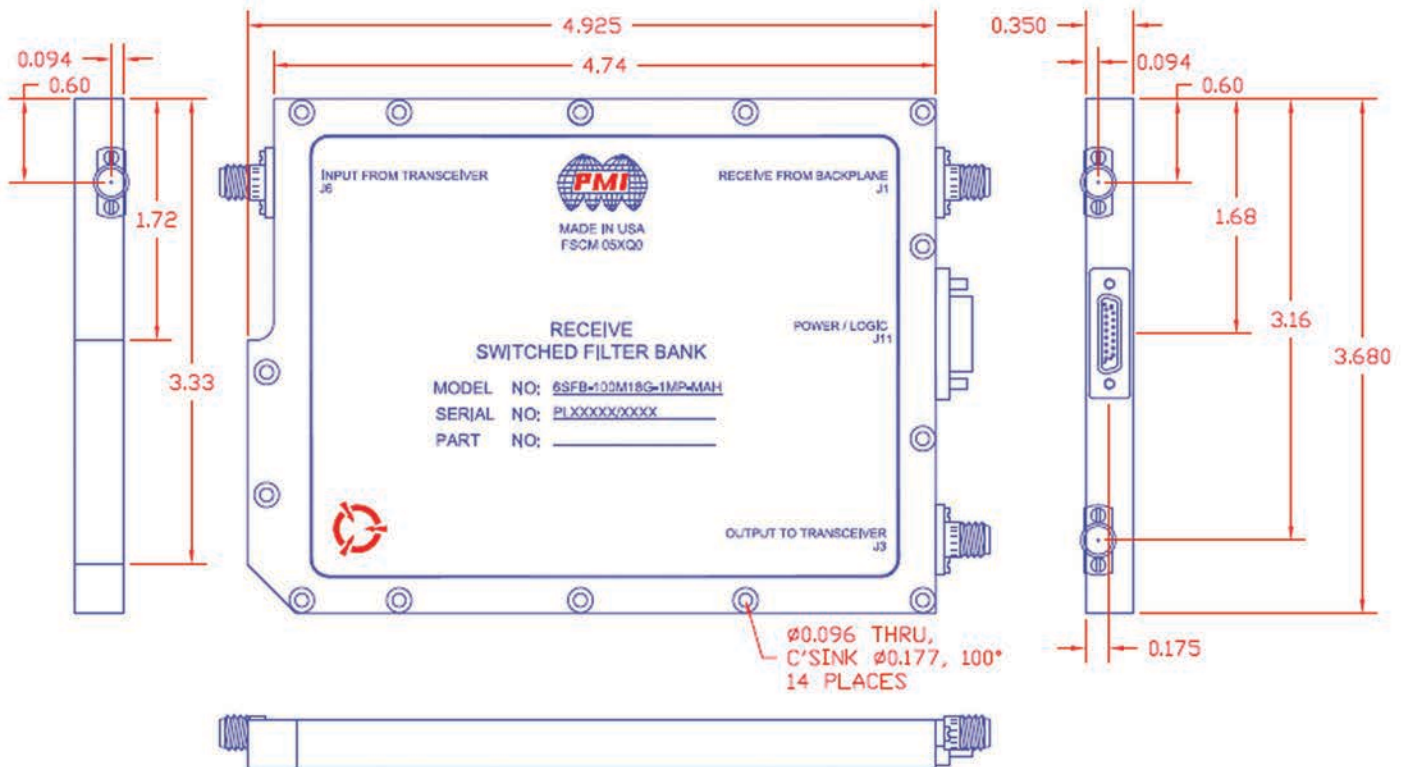
Email: sales@pmi-rf.com | www.pmi-rf.com

ISO9001:2008 Certified

Functional Block Diagram



Mechanical Outline



PLANAR MONOLITHICS INDUSTRIES, INC.

7311-F Grove Road, Frederick,
Maryland 21704 USA |
Tel: 301-662-5019 | Fax: 301-662-1731

4921 Roberts J. Mathews Parkway
Suite 1 El Dorado Hills, CA 95762 USA
Tel: 916-542-1401 | Fax: 916-265-2597

Email: sales@pmi-rf.com | www.pmi-rf.com
ISO9001:2008 Certified